

## SP Lockbolt Steel

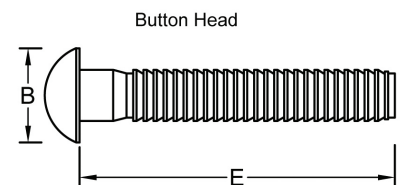
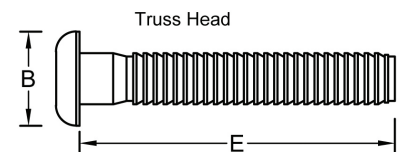
Two piece swage lock fastening system consisting of a pin and collar. A versatile fastener due to its wide grip range, high speed assembly and uniform installed values. Excellent clamping force and vibration resistance. Available in steel and aluminium.

**Material:** Pin: Carbon Steel Collar: Low Carbon Steel

**Finish:** Zinc Plated

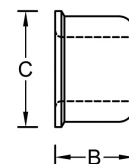


Pin Diameter (nom)	Part Code (Truss Head)	Part Code (Button Head)	Hole mm	Grip Range mm	B (max) mm	E (max) mm
<b>4.8</b> 3/16"	SPTR-0610	SPBR-0610	5.0	1.6 - 16.0	12	45
	SPTR-0620	SPBR-0620		7.9 - 32.0		60
<b>6.4</b> 1/4"	SPTR-0810	SPBR-0810	6.6	1.6 - 16.0	14	50
	SPTR-0820	SPBR-0820		7.9 - 32.0		65
	SPTR-0832			28.0 - 50.8		85
<b>7.9</b> 5/16"	SPTR-1012	SPBR-1012	8.1	3.2 - 19.0	16	60
	SPTR-1022	SPBR-1022		15.9 - 35.0		72
<b>9.5</b> 3/8"	-	SPBR-1214	9.7	3.2 - 22.2	19	73
	-	SPBR-1226		20.6 - 41.2		89

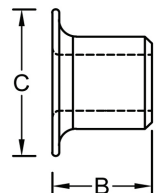


Collar Diameter (nom)	Collar Type	Part Code	B (max) mm	C (max) mm
<b>4.8</b> 3/16"	Standard Flange	SPCR-0600	7.0	9.5
	Wide Flange	SPCR-06WF	8.5	17.0
<b>6.4</b> 1/4"	Standard Flange	SPCR-0800	9.5	13.0
	Wide Flange	SPCR-08WF	11.0	22.0
<b>7.9</b> 5/16"	Standard Flange	SPCR-1000	11.0	16.0
<b>9.5</b> 3/8"	Standard Flange	SPCR-1200	13.0	19.0

Standard Flange SPCR



Wide Flange



Diameter	Clamp KN	Shear KN	Tensile KN
<b>4.8</b> 3/16"	4.1	7.7	6.2
<b>6.4</b> 1/4"	5.3	9.8	11.3
<b>7.9</b> 5/16"	9.6	13.3	17.4
<b>9.5</b> 3/8"	14.2	18.7	25.0

Detailed dimensions are available on request.

Dimensions and specifications are subject to change without notice.

Check your distributor for the latest data sheet.

The test data provides approximate strength values averaged in multiple tests in various materials and thicknesses.

We recommend testing your application when an exact strength figure is required, or the load to be applied comes close to the published data.

0115